

DSTF meeting

April 21-22, 2022

Pernille Tveden-Nyborg, DVM, PhD
Dept. of Veterinary and Animal Sciences
Faculty of Health and Medical Science
University of Copenhagen

UNIVERSITY OF COPENHAGEN



Department of Veterinary and Animal Sciences

Parasitology and Aquatic Pathobiology

Food safety and Zoonoses

Veterinary Clinical Microbiology

Production, Nutrition and Health

Animal Welfare and Disease Control

Pathobiological Sciences

Experimental Animal Models

Comparative Paediatrics and Nutrition

Experimental Pharmacology and Toxicology



Toxicology in study programs

Veterinary medicine

Human nutrition

Bachelor and master projects

Pathology and Pharmacology

Animal Science

Biotechnology

In vivo pharmacology

Lab animal science

Lab animal pathology



Toxicology in veterinary medicine



Bachelor

Pharmacology

Pathology

**Bachelor and
master projects**

Master

Internal Medicine

Clinical rotations

Pathology

**Biomedicine
Differentiation**



The biomedicine differentiation



Laboratory Animal Science

Laboratory Animal Pathology

Experimental Design

**In vivo Pharmacology and
Toxicology**

**Animal models of human
diseases**

**Lectures
Case work
Pathology
General principles
Regulatory toxicology**

Master projects

Toxicology in PhD and Postdoc educations



Currently 32 PhD students
9 projects w toxicology focus



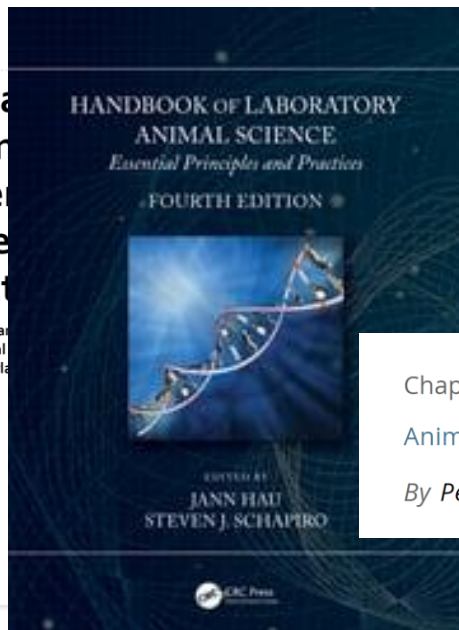
Director: Prof. Jens Lykkesfeldt



scientific reports

OPEN Atorvastatin
mitochondrial
Göttinger
and skeletal
not affected

Liselotte Bruun Christensen,
Ewa Parfieniuk⁴, Michal
Luca Tiano⁶, Patrick Orlandi



Chapter Chapter 27 | 30 pages

Animal Models in Pharmacology and Toxicology

By Pernille Tveden-Nyborg, Jens Lykkesfeldt

BCPT
Basic & Clinical Pharmacology & Toxicology

ARTICLE | [Free Access](#)

Counterregulatory response to hypoglycaemia in the pig

Christina J. Gradel , Jonas Kildegaard, Trine P. Ludvigsen, Trine Porsgaard, Anne Marie V. Schou-Andersen, Johannes J. Fels, Jens Lykkesfeldt, Hanne H. F. Refsgaard

First published: 28 April 2020 | <https://doi.org/10.1111/bcpt.13422> | Citations: 3

ORIGINAL RESEARCH ARTICLE

January 2021

Endocrinology, Diabetes
& Metabolism [Open Access](#) WILEY

renal GLP-1R leads to expression of *Ren1* in r tree

Katrine Dahl Bjørnholm^{1,2}  | Maria Elm Ougaard³ | Gry Freja Skovsted¹ |
Lotte Bjerre Knudsen⁴ | Charles Pyke³


Jensen et al. *J Transl Med* (2021) 19:80
<https://doi.org/10.1186/s12967-021-02729-1>

Journal of
Translational Medicine

RESEARCH

Open Access

Insulin treatment improves liver
histopathology and decreases expression
of inflammatory and fibrogenic genes
in a hyperglycemic, dyslipidemic hamster model
of NAFLD

Victoria Svop Jensen^{1,2*} , Christian Fledelius², Christina Zachodnik², Jesper Damgaard², Helle Nygaard²,
Kristina Steinicke Tornqvist², Rikke Kaae Kirk³, Birgitte Martine Viuff³, Erik Max Wulff⁴, Jens Lykkesfeldt¹
and Henning Hvid³

BCPT
Basic & Clinical Pharmacology & Toxicology

ORIGINAL ARTICLE | [Free Access](#)

The effect of acetylsalicylic acid and pentoxifylline in guinea pigs with non-alcoholic steatohepatitis

David Højland Ipsen, Josephine Skat-Rørdam, Marianne Svenningsen, Mia Andersen, Markus Latta, Lene Elisabeth Buelund, Kristine Lintrup, René Skaarup, Jens Lykkesfeldt, Pernille Tveden-Nyborg 

First published: 22 December 2020 | <https://doi.org/10.1111/bcpt.13549> | Citations: 3

