



Arbejdstilsynet

Toxicology in the Danish Authority for the Working Environment

Flemming Ingerslev, Special Advisor, Ph.D.

Office of Chemicals and Technique

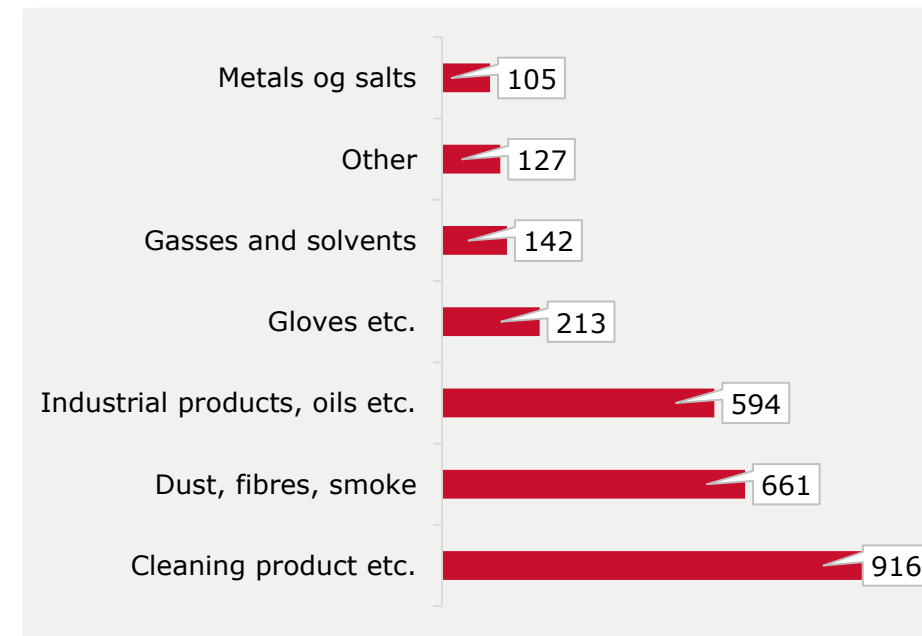
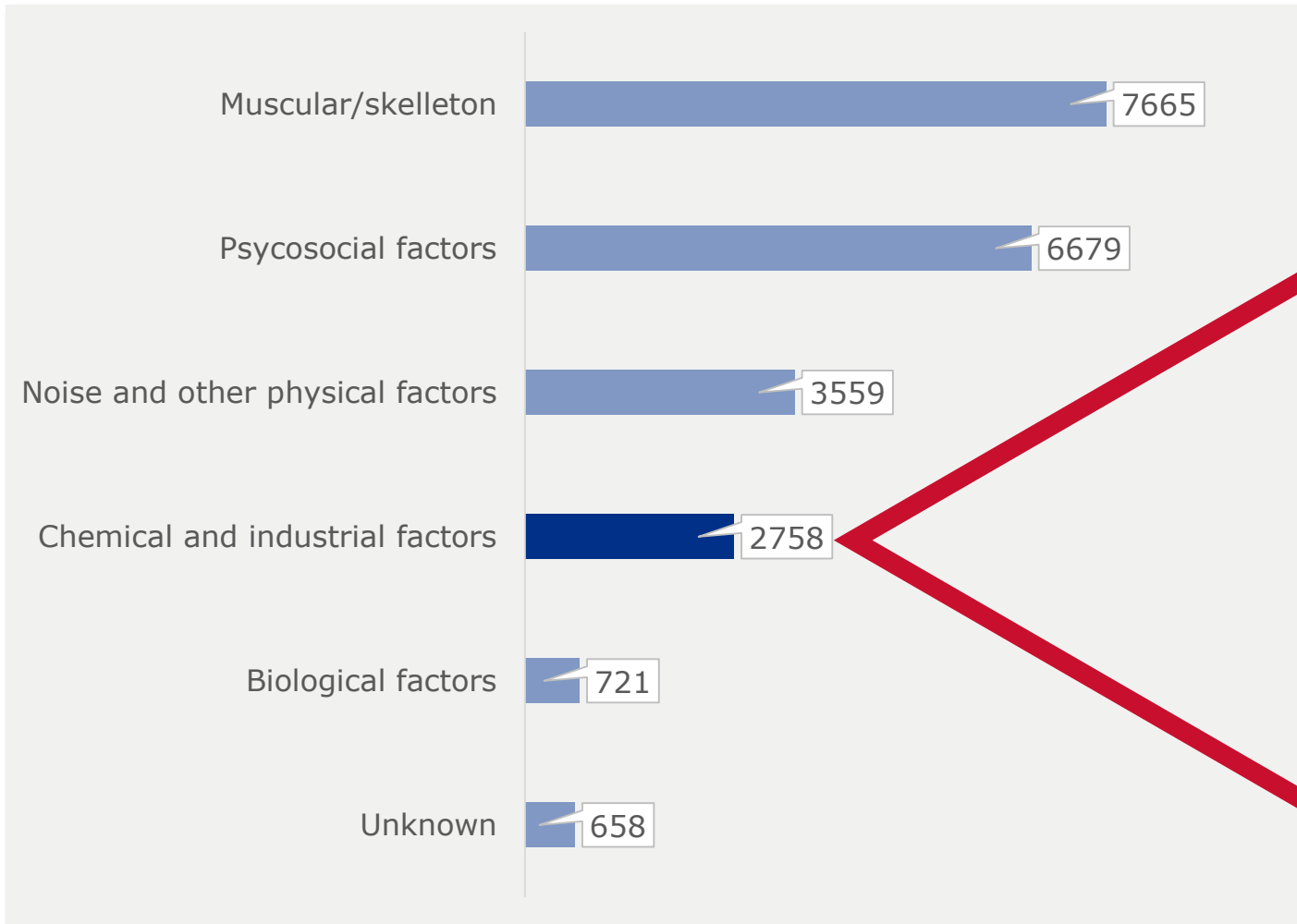
The Danish Authority for the Working Environment

Work areas

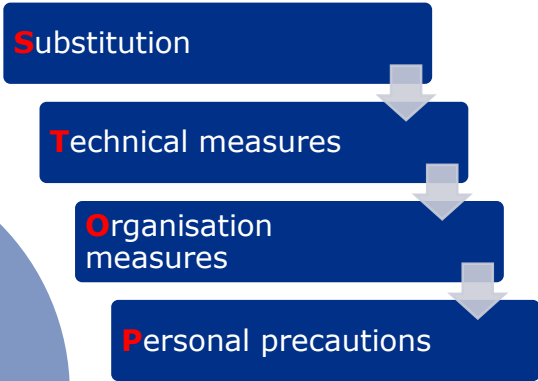
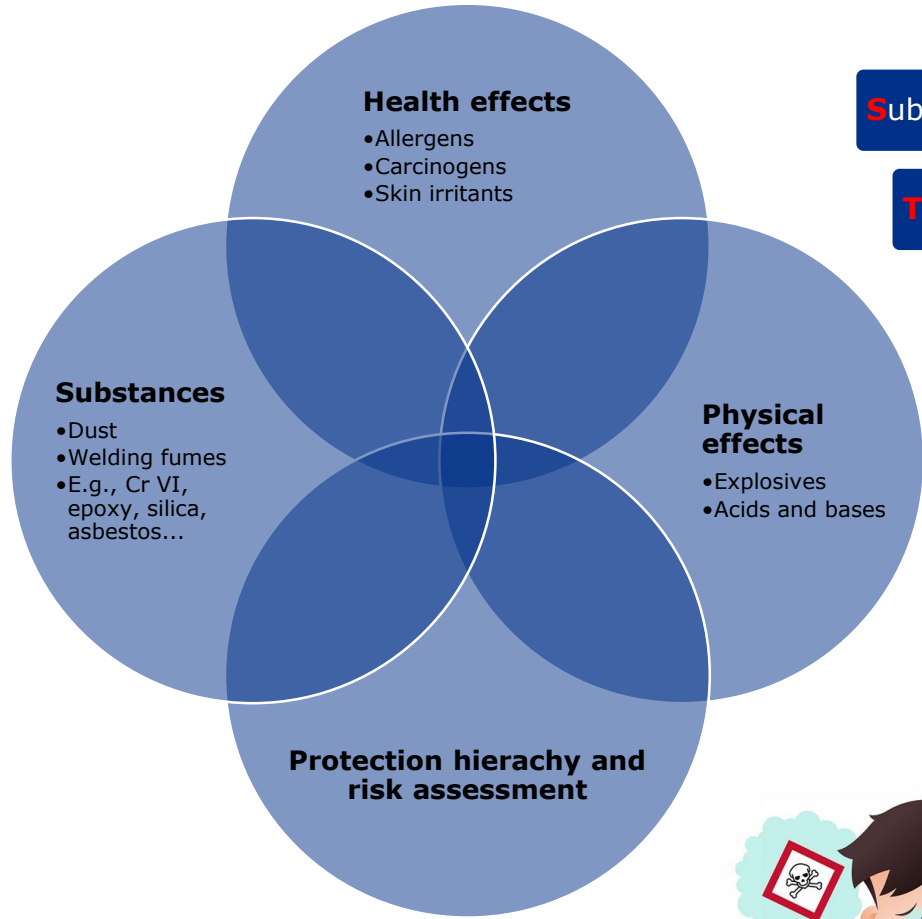
- Legislative development, interpretation and procedural development
- Implementation and negotiation of EU directives (asbestos, carcinogens, chemical agents etc.)
- Serving the minister of employment
- Participation in international fora (e.g. ECHA's Enforcement Forum)
- Guidance to employers and employees
- General facilitation of labour inspections (support in relation to level of enforcement on chemistry)
- Specific support to the inspectors in complex or difficult enforcement proceedings



Reported work related diseases (2020)



Chemistry at NWEA

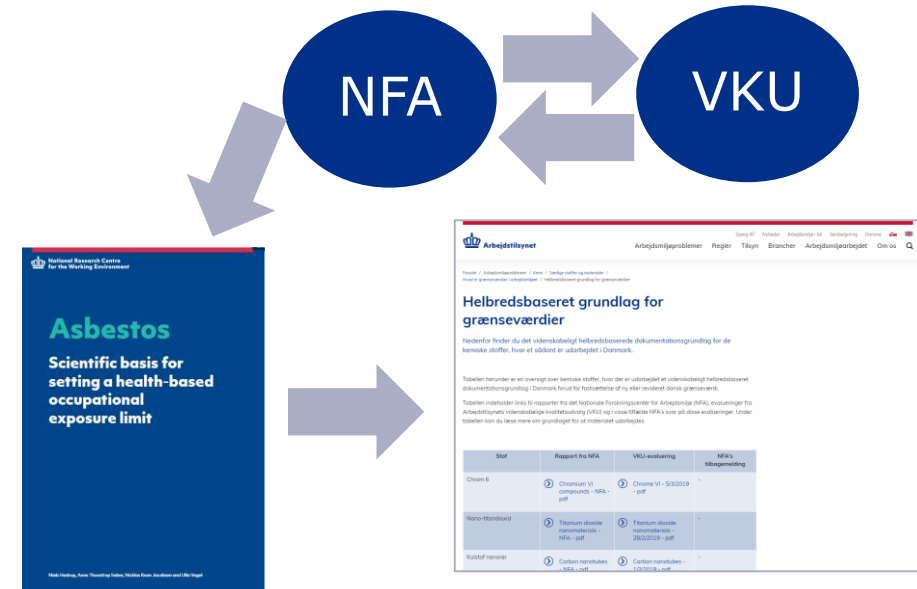


Current focus - Occupational Exposure Limits (OELs)

- Political demand for reassessment of the approx. 670 DK OELs in 2018
- EU-focus on carcinogens and chemical agents => demand for 25 new or updated OELs

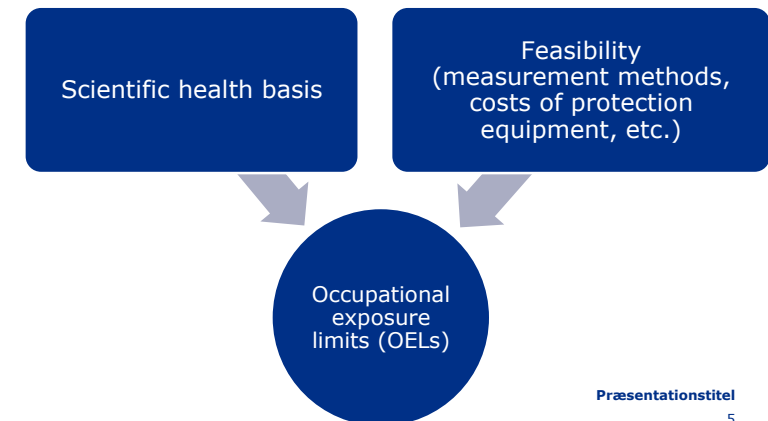
Scientific health basis from:

- ECHA's Risk assessment committee (RAC)
- SCOEL, NIOSH, DECOS (NL), MAC (DE), etc.
- National Research Center for the Working Environment (NFA), review by scientific committee appointed by NWEA



Feasibility assessment and decision of OEL

- In DK:
 1. Tripartite discussions among NWEA and the social partners
 2. Political agreement (Minister of employment)
- In EU:
 1. The Advisory Committee on Safety and Health at Work (tripartite)
 2. Proposal by the Commission
 3. EU-decision procedure involving parliament, council and Commission



Current focus - Asbestos

- Jan. 1st 2022 DK-OEL reduced from 0,1 to 0,003 fibre/cm³.
- EU-negotiations of the asbestos directive expected in 2022. Primary focus expected on reducing existing EU-OEL of 0,1 fibre/cm³
- DK-political discussions following up on the 20 recommendations from 2018



Current focus

- Implementation EU-directives (reprotoxins)
- Stepwise simplification and clarification of existing national regulation
 - Use of monitoring and measurements
 - Short term occupational exposure limits
 - Recirculation
 -
 -
- REACH and CLP
 - Better use of safety data sheets
 - Authorisation of substances under REACH